



STORMWATER SOLUTIONS / COLLECTION & CONVEYANCE / DUAL-WALL

GOLDFLO WT®

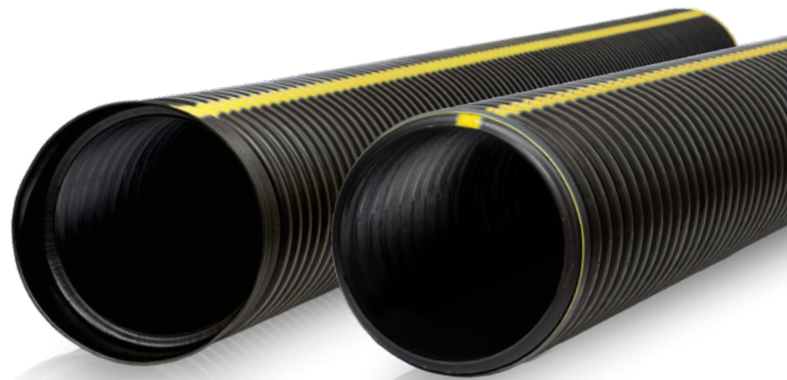
GOLDFLO WT® provides unsurpassed performance for watertight stormwater conveyance and management. It is designed and manufactured with state-of-the-art methods ensuring maximum material performance and maximum structural performance.

GOLDFLO WT® is manufactured to the most stringent requirements of AASHTO M294 or ASTM F2306, along with the ASTM D3212 watertight laboratory test requirements, making it ideal for projects where low cost, high installation efficiency, high product quality, and maximum watertight performance are critical.

Performance

GOLDFLO WT® pipe meets the following:

- **ASTM F2306:** Standard Specification for 12" - 60" (300 - 1500 mm) Annular Corrugated Profile-Wall Polyethylene (PE) Pipe and Fittings for Gravity-Flow Storm Sewer and Subsurface Drainage Applications
- **AASHTO M252:** Standard Specification for Corrugated Polyethylene Drainage Pipe, 4" - 10" (100 - 250mm) Diameter
- **AASHTO M294:** Standard Specification for Corrugated Polyethylene Pipe, 12" - 60" (300 - 1500 mm) Diameter
- **ASTM F477:** Standard Specification for Elastomeric Seals (Gaskets) for Joining Plastic Pipe
- **ASTM D3212:** Standard Specification for Joints for Drain and Sewer Plastic Pipes using Flexible Elastomeric Seals

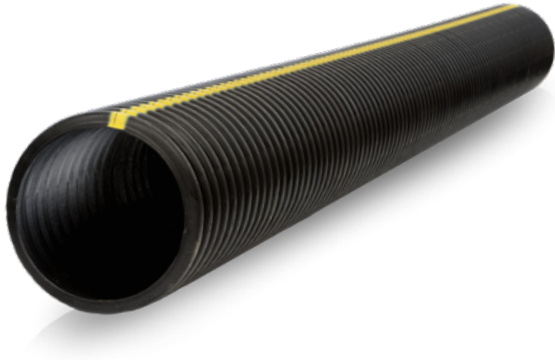


Available Sizes

Diameter (in.)	Number	Nominal Length
4"	04WT20NP	20'
6"	06WT20NP	20'
8"	08WT20NP	20'
10"	10WT20NP	20'
12"	12WT10NP/12WT20NP	10'/20'
15"	15WT10NP/15WT20NP	10'/20'
18"	18WT10NP/18WT20NP	10'/20'
24"	24WT10NP/24WT20NP	10'/20'
30"	30WT12NP/30WT20NP*	12'/20'
36"	36WT12NP/36WT20NP*	12'/20'
42"	42WT12NP/42WT20NP*	12'/20'
48"	48WT12NP/48WT20NP *	12'/20'
60"	60WT12NP/60WT20NP*	12'/20'

(Pipe is available perforated.)

* Special Order Items



Plain End Available Sizes

Diameter (in.)	Number	Nominal Length
4"	04GF20NP	20'
6"	06GF20NP	20'
8"	08GF20NP	20'
10"	10GF20NP	20'
12"	12GF20NP	20'
15"	15GF20NP	20'
18"	18GF20NP	20'
24"	24GF20NP	20'
(Pipe is available perforated.)		

GOLDFLO® Plain End Dual-Wall

GOLDFLO® is a high density polyethylene plastic pipe manufactured to the stringent requirements of AASHTO M294, AASHTO M252 and ASTM F2306, ensuring you receive a quality, high performance product. GOLDFLO® is available with a soil tight joint configuration in 4"- 36".



Green Fact:

The carbon footprint of HDPE is considerably smaller than concrete because it requires less energy to manufacture, transport and install.

MOBILE RESOURCES



More about GOLDFLO WT & GOLDFLO

- Installation Videos
- Installation Documents
- Specifications
- Technical Notes

Prinsco.com/GOLDFLOWT-Resources



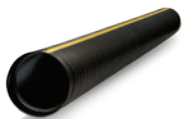
Prinsco.com/GOLDFLO-Resources



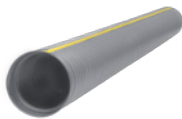
ENGINEERED WITH INTEGRITY

Prinsco products are fully supported by our engineering team and are designed, manufactured and tested to meet/exceed the high performance needs of the construction market. Prinsco's engineering, quality control and production teams are committed to a continuous process of innovation, product development and quality improvement. We are focused on current and future market needs centered around environmental sustainability, water quality, stormwater management and performance advancement.

COLLECTION & CONVEYANCE

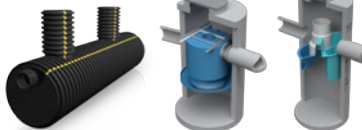


GOLDFLO WT®
AASHTO Dual-Wall Pipe



GOLDPRO STORM™
Dual-Wall HP Polypropylene

TREATMENT

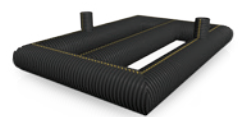


STORMWATER QUALITY™
Engineered Water Treatment

STORAGE



HYDROSTOR™
Arched Chambers



UNDERGROUND DETENTION
Customized Pipe Systems



PRINSCO.COM

800.992.1725