

GOLDPRO STORM™



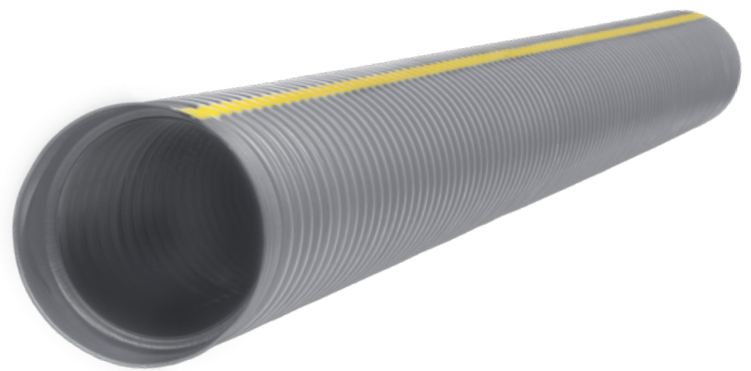
STORMWATER SOLUTIONS / COLLECTION & CONVEYANCE / DUAL-WALL

GOLDPRO STORM™

GOLDPRO Storm™ is a dual-wall corrugated polypropylene pipe. The combination of our engineered materials and watertight joint design result in a high performance pipe solution that is ideal for critical stormwater management applications.

GOLDPRO Storm™ meets the stringent requirements of ASTM F2881 and AASHTO M330, with joints that meet the requirements of ASTM D3212.

GOLDPRO Storm™ is perfect for projects where structural integrity, joint performance, installation efficiency, and overall quality are critical to your success.



Performance

GOLDPRO Storm™ pipe meets the following:

- **ASTM F2881:** Standard Specification for 12 to 60 in (300 to 1500mm) Polypropylene (PP) Dual-Wall Pipe and Fittings for Non-Pressure Storm Sewer Applications
- **AASHTO M330:** Standard Specification for Polypropylene Pipe, 300- to 1500-mm (12- to 60-in.) Diameter
- **ASTM D3212:** Standard Specification for Joints for Drain and Sewer Plastic Pipes using Flexible Elastomeric Seals
- **ASTM F477:** Standard Specification for Elastomeric Seals (Gaskets) for Joining Plastic Pipe

Available Sizes

Diameter (in.)	Number	Nominal Length
12"	12PP20NP	20'
15"	15PP20NP	20'
18"	18PP20NP	20'
24"	24PP20NP	20'
30"	30PP20NP	20'
36"	36PP20NP	20'
42"	42PP20NP	20'
48"	48PP20NP	20'
60"	60PP20NP	20'

Applications

- Storm Sewers
- Highway Drainage
- Industrial Applications
- Ditch Enclosures
- Other Critical Drainage Applications

* Contact your Prinsco representative regarding application suitability questions.

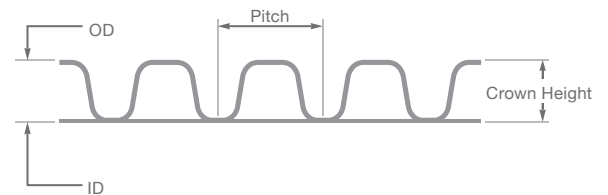
Features

- Engineered blend of polypropylene material ensures maximum service life and maximum performance
- Increased pipe stiffness results in greater installation security
- Increased beam stiffness helps to hold true grade when site conditions vary unexpectedly
- Joint performance is enhanced to maximize the field service performance and less site conditions related sensitivity
- The industry proven dual-wall design ensures reliable and consistent long term performance
- Lightweight and easy field manipulation saves time, labor, and allows for the use of smaller equipment while contributing to a safer working environment
- Fittings to meet your specific needs and reduce field fabrication and costly structures

Physical Pipe Dimensions

Nominal ID (in)	Approximate OD (in)	Length (ft)	Corrugation Pitch (in)	Min. Pipe Stiffness @ 5% Deflection (psi)
12"	14.6	20'	2.00	70
15"	17.8	20'	2.67	60
18"	21.5	20'	3.00	56
24"	28.2	20'	4.00	50
30"	34.7	20'	4.00	46
36"	40.9	20'	4.00	40
42"	47.9	20'	6.00	35
48"	54.6	20'	6.00	30
60"	67	20'	5.90	25

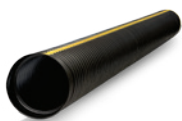
Pipe Cross Section



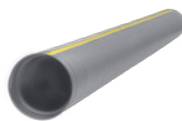
ENGINEERED WITH INTEGRITY

Prinsco products are fully supported by our engineering team and are designed, manufactured and tested to meet/exceed the high performance needs of the construction market. Prinsco's engineering, quality control and production teams are committed to a continuous process of innovation, product development and quality improvement. We are focused on current and future market needs centered around environmental sustainability, water quality, stormwater management and performance advancement.

COLLECTION & CONVEYANCE

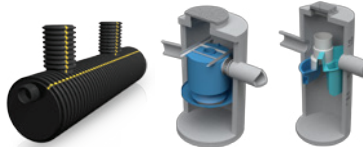


GOLDFLO WT®
AASHTO Dual-Wall Pipe



GOLDPRO STORM™
Dual-Wall HP Polypropylene

TREATMENT

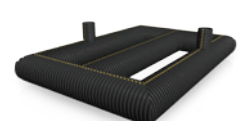


STORMWATER QUALITY
Engineered Water Treatment

STORAGE



HYDROSTOR™
Arched Chambers



UNDERGROUND DETENTION
Customized Pipe Systems