



# **WATERWORKS WHOLESALE BUYERS GUIDE**



by **egw**  
WATER & PLUMBING

# TABLE OF CONTENTS

Flange Packs.....	4	Hex Nuts, Bolts, & Washers.....	14
Gaskets.....	5	Bent Eye Bolts.....	15
Flange Bolt Sets.....	6	Stainless Steel Manhole Straps.....	15
Flange Insulations Kits.....	7	All Thread Rod & Rod Coupling Nuts.....	15
MJ Bolt & Gasket Sets.....	7	Fire Hydrant Adapters.....	16
Bolt Sizing Chart.....	8	Marking & Locating Products.....	18
RITMO America Fusion Equipment.....	10	Miscellaneous Products.....	18
Water Tubing.....	11	Marking Tape.....	19
Pipe Inserts.....	11	Copper Clad Tracer Wire.....	19
Custom Fabrication Products.....	11	Wire Connectors.....	19
Lead-Free Brass Valves.....	12	Magnetized Tracer Stations.....	19
Meter & Companion Flanges.....	12	Polyethylene Encasement for Ductile Iron Pipe.....	20
Meter Couplings & Bushings.....	13	Polywrap Tape.....	20
Meter Flange Gaskets & Bolt Sets.....	13	Denso Corrosion Protection Products.....	21
Meter Washers.....	14	Digging & Striking Tools.....	22

All customers are encouraged to use White Rhino Item ID numbers when ordering to expedite your order being entered.

BLUE CIRCLES DENOTE STOCK PRODUCTS: ●

## CORE VALUES

### WE WILL:

- DO THE RIGHT THING
- PUT CUSTOMERS FIRST
- CARE FOR TEAMMATES
- WORK HARD
- CONSTANTLY IMPROVE
- HAVE FUN

## CORE PURPOSE

SOLVING PROBLEMS | MAKING CONNECTIONS | SERVING OTHERS

SCAN TO VISIT TO OUR WEBSITE





# FLANGE PACKS



150# PLAIN FINISH W/RED RUBBER FULL FACE 1/8" GASKET

150# ZINC PLATED W/RED RUBBER FULL FACE 1/8" GASKET

150# GRADE 5 FINISH W/RED RUBBER FULL FACE 1/8" GASKET

150# 304 STAINLESS W/RED RUBBER RING 1/8" GASKET

FLANGE SIZE	ITEM ID	MASTER CARTON QTY
2"	19178	10
2-1/2"	19180	10
3"	19182	10
4"	19184	10
5"	19186	10
6"	19188	10
8"	19191	5
10"	19193	5
12"	19195	5
14"	19196	1
16"	19197	1
18"	19198	1
20"	19199	1
24"	19200	1

FLANGE SIZE	ITEM ID	MASTER CARTON QTY
2"	19267	10
2-1/2"	19269	10
3"	19271	10
4"	19275	10
5"	19277	10
6"	19279	10
8"	19282	5
10"	19284	5
12"	19287	5
14"	19288	1
16"	19289	1
18"	19290	1
20"	19291	1
24"	19292	1

FLANGE SIZE	ITEM ID	MASTER CARTON QTY
2"	19096	10
2-1/2"	19097	10
3"	19098	10
4"	19099	10
5"	19100	10
6"	19101	10
8"	19102	5
10"	19103	5
12"	19104	5
14"	19105	1
16"	19106	1
18"	19020	1
20"	19107	1
24"	19108	1

FLANGE SIZE	ITEM ID	MASTER CARTON QTY
2"	40412	10
2-1/2"	42799	10
3"	39390	10
4"	33798	10
5"	42798	10
6"	33799	10
8"	33800	5
10"	42800	5
12"	35843	5
14"	42801	1



150# 304 STAINLESS W/RED RUBBER FULL FACE 1/8" GASKET

150# 316 STAINLESS W/RED RUBBER FULL FACE 1/8" GASKET

150# PLAIN FINISH W/RED RUBBER RING 1/8" GASKET

150# ZINC PLATED W/RED RUBBER RING 1/8" GASKET

FLANGE SIZE	ITEM ID	MASTER CARTON QTY
2"	19042	10
2-1/2"	19044	10
3"	19046	10
4"	19047	10
5"	19049	10
6"	19051	10
8"	19054	5
10"	19056	5
12"	19058	5
14"	19059	1
16"	19060	1
18"	19061	1
20"	19062	1
24"	19063	1

FLANGE SIZE	ITEM ID	MASTER CARTON QTY
2"	19074	10
2-1/2"	19075	10
3"	19076	10
4"	19077	10
5"	19078	10
6"	19079	10
8"	19080	5
10"	19082	5
12"	19083	5
14"	19084	1
16"	19085	1
18"	19086	1
20"	19087	1
24"	19088	1

FLANGE SIZE	ITEM ID	MASTER CARTON QTY
2"	19206	10
2-1/2"	19207	10
3"	19208	10
4"	19209	10
5"	19210	10
6"	19211	10
8"	19212	5
10"	19213	5
12"	19214	5

FLANGE SIZE	ITEM ID	MASTER CARTON QTY
1-1/4"	19297	10
2"	19299	10
2-1/2"	19300	10
3"	19301	10
4"	19302	10
5"	19303	10
6"	19304	10
8"	19305	5
10"	19306	5
12"	19307	5

Not restricted to sizes shown, other sizes available upon request

Xylan coating can be applied per customer specifications.

## Other gasket materials available:

- Black SBR
- Non-asbestos
- Cloth Inserted
- Nitrile
- Neoprene
- EPDM
- Viton
- Teflon

NSF, domestic and speciality gaskets also available upon request.



# GASKETS



**150# 1/16" RED RUBBER FULL FACE GASKETS**

FLANGE SIZE	ITEM ID
1/2"	16421
3/4"	16422
1"	16423
1-1/4"	16424
1-1/2"	16425
2"	16426
2-1/2"	16427
3"	16428
4"	16429
5"	16430
6"	16431
8"	16432
10"	16433
12"	16434
14"	16435
16"	16436
18"	16437
20"	16438
24"	16439
30"	22387
36"	16440



**150# 1/8" RED RUBBER FULL FACE GASKETS**

FLANGE SIZE	ITEM ID
1/2"	16442
3/4"	16443
1"	16444
1-1/4"	16445
1-1/2"	16446
2"	16447
2-1/2"	16448
3"	16449
4"	16450
5"	16451
6"	16452
8"	16453
10"	16454
12"	16455
14"	16456
16"	16458
18"	16460
20"	16461
24"	16462
30"	16463
36"	16464
42"	16465
48"	16466
54"	16467
60"	16468
66"	22388
72"	22389



**300# 1/16" RED RUBBER FULL FACE GASKETS**

FLANGE SIZE	ITEM ID
1/2"	22874
3/4"	22875
1"	22876
1-1/4"	22877
1-1/2"	22878
2"	22879
2-1/2"	22371
3"	16441
4"	22372
5"	22373
6"	22374
8"	22375
10"	22376
12"	22377
14"	22880
16"	22881
18"	22882
20"	22883
24"	22884



**300# 1/8" RED RUBBER FULL FACE GASKETS**

FLANGE SIZE	ITEM ID
1/2"	22885
3/4"	22886
1"	22887
1-1/4"	22888
1-1/2"	22889
2"	16469
2-1/2"	16470
3"	16471
4"	16472
5"	22369
6"	16473
8"	16474
10"	22370
12"	16475
14"	16476
16"	16477
18"	16478
20"	20184
24"	16479
30"	22378
36"	22379
42"	22380
48"	16480



**150# 1/8" RED RUBBER RING GASKETS**

FLANGE SIZE	ITEM ID
1/2"	16511
3/4"	16512
1"	16513
1-1/4"	16514
1-1/2"	16515
2"	16516
2-1/2"	16517
3"	16518
4"	16519
5"	16520
6"	16521
8"	16522
10"	16523
12"	16524
14"	16525
16"	16526
18"	16527
20"	16528
24"	16529
30"	16530
36"	22381
42"	22382
48"	16531
54"	16532



**300# 1/8" RED RUBBER RING GASKETS**

FLANGE SIZE	ITEM ID
1/2"	22909
3/4"	22910
1"	22911
1-1/4"	22912
1-1/2"	22913
2"	16533
2-1/2"	22914
3"	16534
4"	16535
5"	22915
6"	16536
8"	16537
10"	22916
12"	22917
14"	22918
16"	22919
18"	22920
20"	22921
24"	22922



**150# 1/16" RED RUBBER RING GASKETS**

FLANGE SIZE	ITEM ID
1/2"	16492
3/4"	16493
1"	16494
1-1/4"	16495
1-1/2"	16496
2"	16497
2-1/2"	16498
3"	16499
4"	16500
5"	16501
6"	16502
8"	16503
10"	16504
12"	16505
14"	16506
16"	16507
18"	16508
20"	16509
24"	16510



**300# 1/16" RED RUBBER RING GASKETS**

FLANGE SIZE	ITEM ID
1/2"	22890
3/4"	22891
1"	22892
1-1/4"	22893
1-1/2"	22894
2"	22895
2-1/2"	22896
3"	22897
4"	22898
5"	22899
6"	22900
8"	22901
10"	22902
12"	22903
14"	22904
16"	22905
18"	22906
20"	22907
24"	22908



# FLANGE BOLT SETS



150# FLANGE BOLT SETS PLAIN FINISH  
A-307 GRADE A

FLANGE SIZE	ITEM ID	MASTER CARTON QTY
1/2"	18822	50
3/4"	18823	50
1"	18824	50
1-1/4"	18825	50
1-1/2"	18826	50
2"	18827	50
2-1/2"	18830	50
3"	18830	50
4"	18833	20
5"	18835	10
6"	18835	10
8"	18843	10
10"	18850	1
12"	18850	1
14"	18855	1
16"	18858	1
18"	18861	1
20"	18868	1
24"	18876	1
30"	18887	1
36"	18896	1
42"	18904	1



150# FLANGE BOLT SETS ZINC PLATED  
A-307 GRADE A

FLANGE SIZE	ITEM ID	MASTER CARTON QTY
1/2"	18936	50
3/4"	18937	50
1"	18938	50
1-1/4"	18939	50
1-1/2"	18940	50
2"	18941	50
2-1/2"	18943	50
3"	18943	50
4"	18944	20
5"	18946	10
6"	18946	10
8"	18947	10
10"	18950	1
12"	18950	1
14"	18954	1
16"	18955	1
18"	18957	1
20"	18961	1
24"	18964	1
30"	18971	1
36"	18973	1
42"	18975	1



150# FLANGE BOLT SETS PLAIN FINISH  
A-307 GRADE B

FLANGE SIZE	ITEM ID	MASTER CARTON QTY
3"	18830	50
4"	18833	20
5"	18835	10
6"	18835	10
8"	18843	10
10"	18850	1
12"	18850	1

All sets are for ductile to ductile.  
Need a special size or configuration?  
Need a different finish or grade?  
Give us a call, we can make a kit for  
your special need!

Allow 24 - 48 hours production time  
to build 18" - 48" bolt sets.

Domestic available upon request.



150# FLANGE BOLT SETS  
GRADE 5

FLANGE SIZE	ITEM ID	MASTER CARTON QTY
1-1/2"	18635	50
2"	18636	50
2-1/2"	18637	50
3"	18637	50
4"	18638	20
5"	18640	10
6"	18640	10
8"	18643	1
12"	18643	1
14"	18644	1
16"	18645	1
18"	18646	1
20"	18648	1
24"	18649	1



150# FLANGE BOLT SET  
304 STAINLESS

FLANGE SIZE	ITEM ID	MASTER CARTON QTY
1/2"	18686	50
3/4"	18687	50
1"	18688	50
1-1/4"	18689	50
1-1/2"	18690	50
2"	18691	50
2-1/2"	18693	50
3"	18693	50
4"	18695	20
5"	18700	10
6"	18700	10
8"	18703	10
10"	18708	1
12"	18708	1
14"	18711	1
16"	18712	1
18"	18718	1
20"	18723	1
24"	18728	1



150# FLANGE BOLT SET  
316 STAINLESS

FLANGE SIZE	ITEM ID	MASTER CARTON QTY
1/2"	18762	50
3/4"	18763	50
1"	18764	50
1-1/4"	18765	50
1-1/2"	18766	50
2"	18767	50
2-1/2"	18769	50
3"	18769	50
4"	18770	20
5"	18772	10
6"	18772	10
8"	18773	10
10"	18775	1
12"	18775	1
14"	18777	1
16"	18778	1
18"	18781	1
20"	18783	1
24"	18787	1

Xylan coating can be applied per customer specifications.



## FLANGE INSULATION KITS

## MJ BOLT & GASKET SETS: ASTM A242 & STAINLESS STEEL PER AWWA SPECIFICATIONS



(Optional Gasket Shown)

150# INSULATION KITS, POLY SLEEVES & DOUBLE PHENOLIC AND ZINC WASHERS

FLANGE SIZE	ITEM ID
1/2"	22275
3/4"	15211
1"	15212
1-1/4"	22276
1-1/2"	15216
• 2"	15219
• 2-1/2"	15222
• 3"	15225
• 4"	15228
• 5"	15232
• 6"	15234
• 8"	15239
• 10"	15243
• 12"	15246
14"	15249
16"	15250
18"	15252
20"	15255
24"	15256
30"	15257
36"	15259
42"	15260
48"	15261
54"	15263
60"	15266



MJ BOLT SETS  
PLAIN W/GASKET

FLANGE SIZE	ITEM ID
• 3"	19495
• 4"	19498
• 6"	19501
• 8"	19504
• 10"	19506
• 12"	19508
14"	19510
16"	19511
18"	19513
• 20"	19514
• 24"	19515
• 30"	19517
• 36"	19518
• 42"	19519
48"	19520



MJ BOLT SETS  
XYLAN 1014 W/GASKET

FLANGE SIZE	ITEM ID
• 3"	19521
• 4"	19522
• 6"	19523
• 8"	19524
• 10"	19525
• 12"	19526
14"	19527
• 16"	19528
18"	19529
20"	19530
24"	19531
30"	19532
36"	19533
42"	19534
48"	19535



MJ BOLT SETS  
304 STAINLESS W/GASKET

FLANGE SIZE	ITEM ID
3"	19496
• 4"	19499
• 6"	19502
• 8"	19505
• 10"	19507
• 12"	19509
14"	22188
16"	19512
18"	22189
20"	22190
24"	19516
30"	22191
36"	22192
42"	22193
48"	22194

MJ TRANSITION BOLT SETS  
PLAIN W/GASKET

FLANGE SIZE	ITEM ID
3"	15574
4"	15575
6"	15576
8"	15577
10"	15578
12"	15579

MJ TRANSITION BOLT SETS  
XYLAN W/GASKET

FLANGE SIZE	ITEM ID
• 3"	19542
4"	19543
6"	22868
8"	22869
10"	22870
12"	22871

MJ BOLT SETS  
316 STAINLESS W/GASKET

FLANGE SIZE	ITEM ID
3"	19494
• 4"	19497
• 6"	19500
• 8"	19503
• 10"	20467
• 12"	20468
14"	19563
16"	20469
18"	20470
20"	19565
24"	20471
30"	20941
36"	20942
42"	20943
48"	22259



Standard packaging is boxed, polybag packaging available upon request.

Bulk tee bolts by the bucket also available in ASTM A242 weathering steel, type 304 and type 316 stainless steel.

Domestic available upon request.



Xylan coating can be applied per customer specifications.

Other sleeves and washers by request.  
Gasket not included. Available upon request in various materials.

FLANGE SIZE	# OF BOLT HOLES	DUCTILE IRON FLANGE X DUCTILE IRON FLANGE	DUCTILE IRON FLANGE X DUCTILE IRON FLANGE (WITH INSULATION)	DUCTILE IRON FLANGE X CLASS D STEEL FLANGE	DUCTILE IRON FLANGE X CLASS D STEEL FLANGE (WITH INSULATION)
1"	4	1/2"-13 x 2"	1/2"-13 x 2-1/2"		
1-1/4"	4	1/2"-13 x 2"	1/2"-13 x 2-1/2"		
1-1/2"	4	1/2"-13 x 2"	1/2"-13 x 2-1/2"		
2"	4	5/8"-11 x 2-1/2"	5/8"-11 x 3"		
2-1/2"	4	5/8"-11 x 3"	5/8"-11 x 3-1/2"		
3"	4	5/8"-11 x 3"	5/8"-11 x 3-1/2"		
4"	8	5/8"-11 x 3"	5/8"-11 x 3-1/2"	5/8"-11 x 2-3/4"	5/8"-11 x 3-1/4"
5"	8	3/4"-10 x 3-1/4"	3/4"-10 x 3-3/4"	3/4"-10 x 2-3/4"	3/4"-10 x 3-1/4"
6"	8	3/4"-10 x 3-1/4"	3/4"-10 x 4"	3/4"-10 x 3"	3/4"-10 x 3-1/2"
8"	8	3/4"-10 x 3-1/2"	3/4"-10 x 4"	3/4"-10 x 3"	3/4"-10 x 3-1/2"
10"	12	7/8"-9 x 3-3/4"	7/8"-9 x 4-1/2"	7/8"-9 x 3-1/2"	7/8"-9 x 3-3/4"
12"	12	7/8"-9 x 3-3/4"	7/8"-9 x 4-1/2"	7/8"-9 x 3-1/2"	7/8"-9 x 4"
14"	12	1"-8 x 4-1/2"	1"-8 x 5"	1"-8 x 4"	1"-8 x 4-1/2"
16"	16	1"-8 x 4-1/2"	1"-8 x 5"	1"-8 x 4"	1"-8 x 4-1/2"
18"	16	1-1/8"-7 x 5"	1-1/8"-7 x 5-1/2"	1-1/8"-7 x 4-1/2"	1-1/8"-7 x 5"
20"	20	1-1/8"-7 x 5"	1-1/8"-7 x 5-1/2"	1-1/8"-7 x 4-1/2"	1-1/8"-7 x 5"
24"	20	1-1/4"-7 x 5-1/2"	1-1/4"-7 x 6"	1-1/4"-7 x 5"	1-1/4"-7 x 5-1/2"
30"	28	1-1/4"-7 x 6-1/2"	1-1/4"-7 x 7"	1-1/4"-7 x 5-1/2"	1-1/4"-7 x 6"
36"	32	1-1/2"-6 x 7"	1-1/2"-6 x 7-3/4"	1-1/2"-6 x 6"	1-1/2"-6 x 7"
42"	36	1-1/2"-6 x 7-3/4"	1-1/2"-6 x 8"	1-1/2"-6 x 6-1/2"	1-1/2"-6 x 7"
48"	44	1-1/2"-6 x 7-3/4"	1-1/2"-6 x 8-1/2"	1-1/2"-6 x 7"	1-1/2"-6 x 7-1/2"
54"	44	1-3/4"-5 x 9"	1-3/4"-5 x 9-1/2"	1-3/4"-5 x 8"	1-3/4"-5 x 8-1/2"
60"	52	1-3/4"-5 x 9"	1-3/4"-5 x 9-1/2"	1-3/4"-5 x 8-1/2"	1-3/4"-5 x 9"
66"	52	1-3/4"-5 x 9-1/2"	1-3/4"-5 x 10"	1-3/4"-5 x 9"	1-3/4"-5 x 9-1/2"
72"	60	1-3/4"-5 x 10"	1-3/4"-5 x 10-1/2"	1-3/4"-5 x 9"	1-3/4"-5 x 9-1/2"
78"	64	2"-4.5 x 10-1/2"	2"-4.5 x 11"	2"-4.5 x 9-1/2"	2"-4.5 x 10"
84"	64	2"-4.5 x 11"	2"-4.5 x 11-1/2"	2"-4.5 x 10"	2"-4.5 x 10-1/2"
90"	68	2-1/4"-4.5 x 11-1/2"	2-1/4"-4.5 x 12"	2-1/4"-4.5 x 10-1/2"	2-1/4"-4.5 x 11"
96"	68	2-1/4"-4.5 x 12"	2-1/4"-4.5 x 12-1/2"	2-1/4"-4.5 x 11"	2-1/4"-4.5 x 11-1/2"
102"	72	2-1/2"-4 x 12-1/2"	2-1/2"-4 x 13"	2-1/2"-4 x 11"	2-1/2"-4 x 11-1/2"
108"	72	2-1/2"-4 x 13"	2-1/2"-4 x 14"	2-1/2"-4 x 12"	2-1/2"-4 x 12-1/2"



CLASS D STEEL FLANGE  
X CLASS D STEEL FLANGE

DUCTILE IRON FLANGE  
X CLASS E STEEL FLANGE

DUCTILE IRON FLANGE  
X CLASS E STEEL FLANGE  
(WITH INSULATION)

CLASS E STEEL FLANGE  
X CLASS E STEEL FLANGE

# BOLT SIZING CHART

5/8"-11 x 2-1/2"	5/8"-11 x 3-1/4"	5/8"-11 x 3-3/4"	5/8"-11 x 3-1/2"
3/4"-10 x 2-1/2"	3/4"-10 x 3-1/2"	3/4"-10 x 4"	3/4"-10 x 3-3/4"
3/4"-10 x 2-3/4"	3/4"-10 x 3-1/2"	3/4"-10 x 4"	3/4"-10 x 4"
3/4"-10 x 2-3/4"	3/4"-10 x 4"	3/4"-10 x 4-1/2"	3/4"-10 x 4-1/2"
7/8"-9 x 2-3/4"	7/8"-9 x 4-1/2"	7/8"-9 x 5"	7/8"-9 x 4-1/2"
7/8"-9 x 3"	7/8"-9 x 4-1/2"	7/8"-9 x 5"	7/8"-9 x 5"
1"-8 x 3-1/2"	1"-8 x 5"	1"-8 x 5-1/2"	1"-8 x 5-1/2"
1"-8 x 3-3/4"	1"-8 x 5"	1"-8 x 5-1/2"	1"-8 x 6"
1-1/8"-7 x 4"	1-1/8"-7 x 5-1/2"	1-1/8"-7 x 6"	1-1/8"-7 x 6"
1-1/8"-7 x 4"	1-1/8"-7 x 6"	1-1/8"-7 x 6-1/2"	1-1/8"-7 x 6-1/2"
1-1/4"-7 x 4-1/2"	1-1/4"-7 x 6-1/2"	1-1/4"-7 x 7"	1-1/4"-7 x 7"
1-1/4"-7 x 4-1/2"	1-1/4"-7 x 7"	1-1/4"-7 x 7-1/2"	1-1/4"-7 x 7-1/2"
1-1/2"-6 x 5-1/2"	1-1/2"-6 x 7-3/4"	1-1/2"-6 x 8"	1-1/2"-6 x 8-1/2"
1-1/2"-6 x 6"	1-1/2"-6 x 8"	1-1/2"-6 x 9"	1-1/2"-6 x 9"
1-1/2"-6 x 6"	1-1/2"-6 x 8-1/2"	1-1/2"-6 x 9"	1-1/2"-6 x 9"
1-3/4"-5 x 7"	1-3/4"-5 x 9-1/2"	1-3/4"-5 x 10"	1-3/4"-5 x 10-1/2"
1-3/4"-5 x 7-1/2"	1-3/4"-5 x 10"	1-3/4"-5 x 10-1/2"	1-3/4"-5 x 10-1/2"
1-3/4"-5 x 8"	1-3/4"-5 x 10-1/2"	1-3/4"-5 x 11"	1-3/4"-5 x 11-1/2"
1-3/4"-5 x 8"	1-3/4"-5 x 11"	1-3/4"-5 x 11-1/2"	1-3/4"-5 x 11-1/2"
2"-4.5 x 8-1/2"	2"-4.5 x 11-1/2"	2"-4.5 x 12"	2"-4.5 x 12-1/2"
2"-4.5 x 9"	2"-4.5 x 12"	2"-4.5 x 12-1/2"	2"-4.5 x 12-1/2"
2-1/4"-4.5 x 9-1/2"	2-1/4"-4.5 x 12-1/2"	2-1/4"-4.5 x 13"	2-1/4"-4.5 x 13-1/2"
2-1/4"-4.5 x 10"	2-1/4"-4.5 x 13"	2-1/4"-4.5 x 13-1/2"	2-1/4"-4.5 x 13-1/2"
2-1/2"-4 x 10"	2-1/2"-4 x 14"	2-1/2"-4 x 14-1/2"	2-1/2"-4 x 14-1/2"
2-1/2"-4 x 11"	2-1/2"-4 x 14-1/2"	2-1/2"-4 x 15"	2-1/2"-4 x 14-1/2"

AWWA C207 Class D or E



## FUSION EQUIPMENT

We are an official distributor of top quality RITMO America fusion equipment! One of the most trusted brands worldwide, RITMO has been manufacturing fusion machines and accessories for HDPE, PP, PVDF, PB, and PVC pipes, fittings and other plastic components for over 30 years.

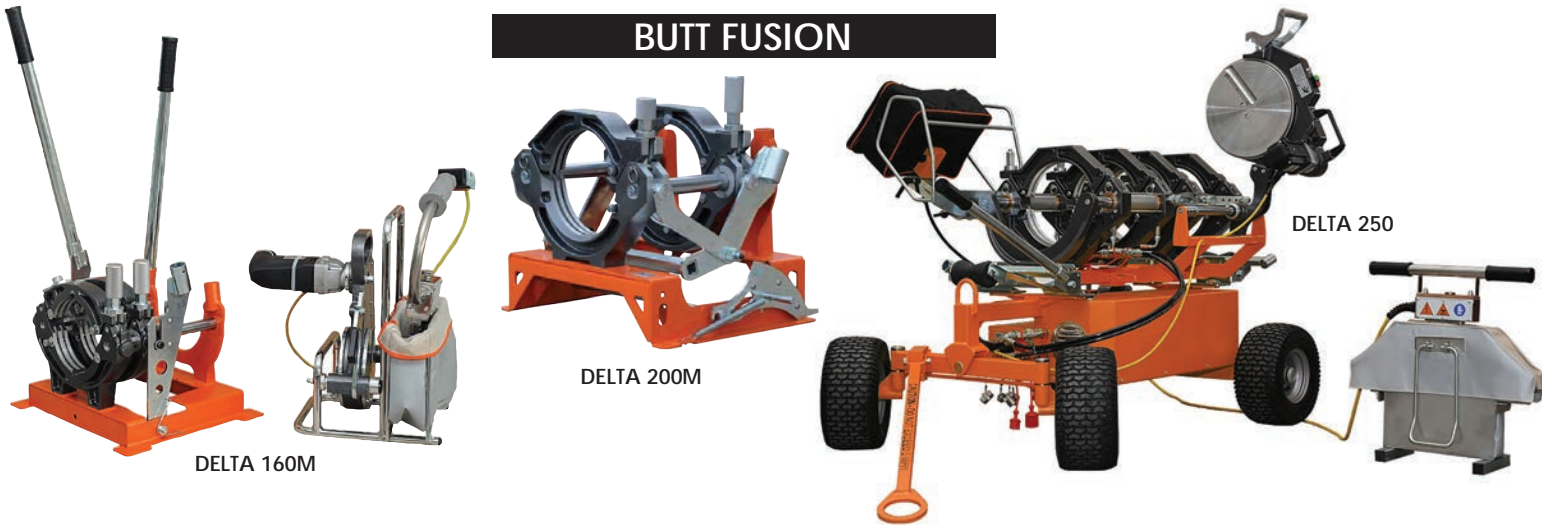
### ELECTROFUSION



### SOCKET FUSION



### BUTT FUSION



### ACCESSORIES





## WATER TUBING



### PE-4710 BLACK

SIZE	ITEM ID	SDR	PSI	QTY/PALLET
• 3/4" CTS X 100'	16111	SDR9	250	2000
• 3/4" CTS X 500'	16112	SDR9	250	5000
• 1" CTS X 100'	16113	SDR9	250	2000
• 1" CTS X 300'	16115	SDR9	250	3300
• 1 1/4" CTS X 100'	16116	SDR9	250	1500
• 1 1/4" CTS X 300'	16117	SDR9	250	2700
• 1 1/2" CTS X 100'	16118	SDR9	250	1800
• 1 1/2" CTS X 300'	16119	SDR9	250	2700
• 2" CTS X 100'	16120	SDR9	250	1500
• 2" CTS X 300'	16121	SDR9	250	2100

### PE-4710 BLUE

SIZE	ITEM ID	SDR	PSI	QTY/PALLET
• 3/4" CTS X 100'	16134	SDR9	250	2000
• 1" CTS X 100'	16136	SDR9	250	2000
• 1" CTS X 300'	16137	SDR9	250	3300
• 1-1/4" CTS X 100'	22443	SDR9	250	1500
• 1 1/2" CTS X 100'	16138	SDR9	250	1800
• 2" CTS X 100'	16139	SDR9	250	1500

### ENDOTRACE PE-4710

SIZE	ITEM ID	SDR	PSI	QTY/PALLET
• 3/4" CTS X 100'	16144	SDR9	250	2000
• 1" CTS X 100'	16145	SDR9	250	2000
• 1-1/4" CTS X 100'	22872	SDR9	250	1500
• 1-1/2" CTS X 100'	22599	SDR9	250	1700
• 2" CTS X 100'	16146	SDR9	250	1500
• 2" IPS X 100'	37511	SDR11	250	1600

Other sizes and types of tubing available.

## PIPE INSERTS



### PIPE INSERTS

DESCRIPTION	ITEM ID
<b>STAINLESS STEEL</b>	
• 3/4" CTS SS STIFFENER	12970
• 1" CTS SS STIFFENER	12967
• 1 1/2" CTS SS STIFFENER	12968
• 2" CTS SS STIFFENER	12969
<b>PLASTIC</b>	
• 1" CTS PLASTIC STIFFENER	19953
• 3/4" CTS PLASTIC STIFFENER	19954

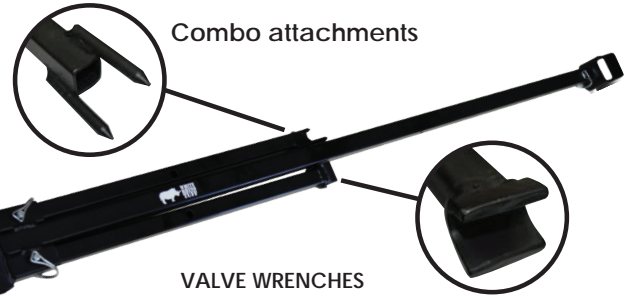
## CUSTOM FABRICATION

### VALVE STEM EXTENSIONS DROP & LOCK AND NON-LOCKING



SIZE (FT)	DROP & LOCK ITEM ID	AUSTIN STYLE ITEM ID
1	17855	17813
1.5	17856	17814
2	17857	17815
2.5	17858	17816
3	17859	17817
3.5	17861	17818
4	17863	17819
4.5	17865	17820
5	17866	17821
5.5	17869	17822
6	17870	17823
6.5	17874	17824
7	17877	17825
7.5	17878	17826
8	17880	17827
8.5	17882	17828
9	17884	17829
9.5	17885	17830
10	17886	17831

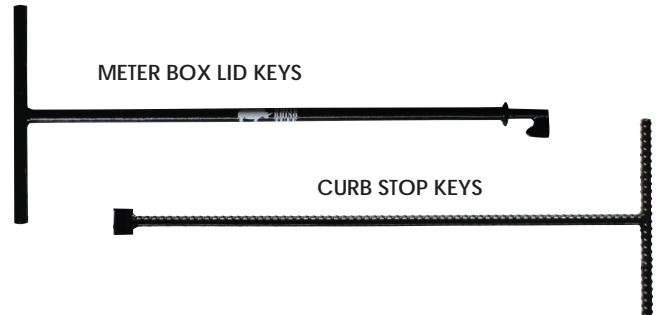
Other sizes and special types can be manufactured per your specifications.



### VALVE WRENCHES

DESCRIPTION	ITEM ID
VALVE WRENCH 3'-6" COMBO	18421
VALVE WRENCH 3'-6"	18422
VALVE WRENCH 5.5'-9.5" COMBO	18423
VALVE WRENCH 5.5'-9.5"	18419

### METER BOX LID KEYS



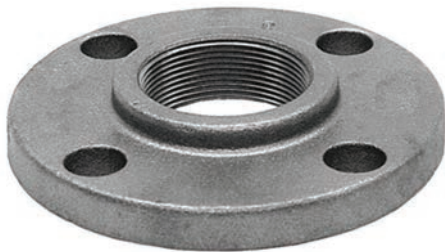
### CURB STOP KEYS



# METER FLANGES, COMPANION FLANGES, & FLANGE KITS



- Kits include zinc bolts & nuts and drop-in gaskets.
- Oval gaskets and SS bolts and nuts available.
- **All meter flanges are certified lead free - NSF-61-G.**
- **Domestic & heavy duty flanges available.**



## FLANGES & FLANGE KITS

DESCRIPTION	ITEM ID
<b>BRASS METER FLANGES</b>	
• 1-1/2" Female NPT, Brass Meter Flange	40368
• 1-1/2" Male NPT, Brass Meter Flange	19679
• 1-1/2" Double Brass Meter Flange Kit, (4) Zinc Plated Hex Bolts & Nuts, (2) Drop-in Gaskets	40535
• 1-1/2" Single Brass Meter Flange Kit, (2) inc Plated Hex Bolts & Nuts, (1) Drop-in Gasket	40536
• 1-1/2" Double Brass Meter Flange Kit, (4) Zinc Plated Hex Bolts w/Brass Nuts, (2) Drop-in Gaskets	12051
• 2" Brass Meter Flange	40369
• 2" Male NPT, Brass Meter Flange	19686
• 2" Double Brass Meter Flange Kit, (4) Zinc Plated Hex Bolts & Nuts, (2) Drop-in Gaskets	40537
• 2" Single Brass Meter Flange Kit, (2) inc Plated Hex Bolts & Nuts, (1) Drop-in Gasket	40538
<b>CAST IRON METER FLANGES</b>	
• 1-1/2" Female NPT, Cast Iron Meter Flange	19677
• 1-1/2" Single Cast Iron Meter Flange Kit, (2) Zinc Plated Hex Bolts & Nuts, (1) Drop-in Gasket	12342
• 1-1/2" Double Cast Iron Meter Flange Kit, (4) Zinc Plated Hex Bolts & Nuts, (2) Drop-in Gaskets	12052
• 2" Cast Iron Meter Flange	19684
• 2" Double Cast Iron Meter Flange Kit, (4) Zinc Plated Hex Bolts & Nuts, (2) Drop-in Gaskets	12057
• 2" Single Cast Iron Meter Flange Kit, (2) Zinc Plated Hex Bolts & Nuts, (1) Drop-in Gasket	12344
<b>BRASS COMPANION FLANGES</b>	
• 2" Brass Companion Flange Kit, (4) Zinc Plated Hex Bolts & Nuts, (1) Full Face Gasket	12102
• 2" Double Brass Companion Flange Kit, (8) Zinc Plated Hex Bolts & Nuts, (2) Full Face Gaskets	12054
• 3" Brass Companion Flange Kit, (4) Zinc Plated Hex Bolts & Nuts, (1) Full Face Gasket	12103
• 3" Double Brass Companion Flange Kit, (8) Zinc Plated Hex Bolts & Nuts, (2) Full Face Gaskets	12059
• 4" Brass Companion Flange Kit, (6) Zinc Plated Hex Bolts & Nuts, (1) Full Face Gasket	12104
• 4" Double Brass Companion Flange Kit, (12) Zinc Plated Hex Bolts & Nuts, (2) Full Face Gaskets	12061
• 6" Brass Companion Flange Kit, (8) Zinc Plated Hex Bolts & Nuts, (1) Full Face Gasket	12105
• 6" Double Brass Companion Flange Kit, (16) Zinc Plated Hex Bolts & Nuts, (2) Full Face Gaskets	12068
<b>CAST IRON COMPANION FLANGES</b>	
• 2" Cast Iron Companion Flange Kit, (4) Zinc Plated Hex Bolts & Nuts, (1) Full Face Gasket	12094
• 2" Double Cast Iron Companion Flange Kit, (8) Zinc Plated Hex Bolts & Nuts, (2) Full Face Gaskets	12056
• 3" Cast Iron Companion Flange Kit, (4) Zinc Plated Hex Bolts & Nuts, (1) Full Face Gasket	12096
• 3" Double Cast Iron Companion Flange Kit, (8) Zinc Plated Hex Bolts & Nuts, (2) Full Face Gaskets	12060
• 4" Cast Iron Companion Flange Kit, (6) Zinc Plated Hex Bolts & Nuts, (1) Full Face Gasket	12100
• 4" Double Cast Iron Companion Flange Kit, (12) Zinc Plated Hex Bolts & Nuts, (2) Full Face Gaskets	12066
• 6" Cast Iron Companion Flange Kit, (8) Zinc Plated Hex Bolts & Nuts, (1) Full Face Gasket	12101
• 6" Double Cast Iron Companion Flange Kit, (16) Zinc Plated Hex Bolts & Nuts, (2) Full Face Gaskets	12068



## METER COUPLINGS & BUSHINGS



### LEAD-FREE BRASS METER COUPLINGS

COUPLING SIZE	ITEM ID
• 5/8"	19675
• 3/4" X 2-1/2"	45295
• 3/4" X 90° Elbow	19643
• 3/4" X 1-1/2"	19672
• 3/4" X 2"	19673
• 3/4" X 3"	19674
• 3/4" X 8-1/2"	42243
• 1" X 1-1/2"	10839
• 1" X 90° Elbow	19637
• 1" X 2"	19638
• 1" X 2-5/8"	45296
• 1-1/2" X 2-7/8"	19639
• 1-1/4" X 2-3/4"	19640
• 1" To 1/2" Reducing	19671
• 2" X 3"	45297

Meter couplings gaskets supplied with brass meter couplings are NSF-61 approved.



### LEAD-FREE BRASS BUSHINGS

SIZE	ITEM ID
• 5/8" X 3/4" X 1" NPSM Threaded	55539
• 3/4" X 1" NPSM Threaded	55540
• 1-1/4" X 1" NPSM Threaded	35469
• 1-1/2" X 1-1/4" NPSM Threaded	10023

## METER FLANGE GASKETS & BOLT SETS



### METER FLANGE GASKETS

SIZE	ITEM ID
OVAL - EPDM	
• 1-1/2"	14618
• 2"	14619
OVAL - RED RUBBER	
• 1-1/2"	14009
• 2"	14011
DROP IN - EPDM	
• 1-1/2"	15556
• 2"	17184
DROP IN - RED RUBBER	
• 1-1/2"	14000
• 2"	14006
OVAL - CLOTH	
• 1-1/2"	24365
• 2"	17141
DROP IN - CLOTH	
• 1-1/2"	20024
• 2"	14003

Other gasket materials available upon request.



### METER FLANGE BOLT SETS

SIZE	ITEM ID
• 1-1/2" - Gr A Zinc Bolts & Nuts, Drop-in Gasket	18525
• 1-1/2" - 304SS Bolts & Nuts, EPDM Drop-in Gasket	12107
• 1-1/2" - 304SS Bolts & Nuts, Red Rubber Drop-in Gasket	12108
• 1-1/2" - Zinc Bolts & Nuts, Red Rubber Drop-in Gasket	12235
• 1-1/2" Double Pack - 304SS Bolts & Nuts, EPDM Drop-in Gaskets	12110
• 1-1/2" Double Pack - Zinc Bolts & Nuts, EPDM Drop-in Gaskets	12299
• 1-1/2" Double Pack - 304SS Bolts & Nuts, Red Rubber Drop-in Gaskets	12111
• 1-1/2" Double Pack - Zinc Bolts & Nuts, Red Rubber Drop-in Gaskets	12236
• 2" - Gr A Zinc Bolts & Nuts, Drop-in Gasket	18528
• 2" - 304SS Bolts & Nuts, EPDM Drop-in Gasket	12173
• 2" - 304SS Bolts & Nuts, Red Rubber Drop-in Gasket	12187
• 2" - Zinc Bolts & Nuts, Red Rubber Drop-in Gasket	12301
• 2" Double Pack - 304SS Bolts & Nuts, EPDM Drop-in Gaskets	12188
• 2" Double Pack - 304SS Bolts & Nuts, Red Rubber Drop-in Gaskets	12190
• 2" Double Pack - Zinc Bolts & Nuts, Red Rubber Drop-in Gaskets	12302



## METER WASHERS



METER COUPLING WASHERS - RUBBER

SIZE	ITEM ID	BAG QTY
5/8" X 1/32"	19476	100
5/8" X 1/16"	19477	100
5/8" X 1/8"	19478	100
3/4" X 1/32"	19479	100
3/4" X 1/16"	19480	100
3/4" X 1/8"	19481	100
1" X 1/32"	19482	100
1" X 1/16"	19483	100
1" X 1/8"	19484	100
1-1/4" X 1/8"	19884	100
1-1/4" X 1/16"	19876	100
1-1/2" X 1/16"	19848	100
1-1/2" X 1/8"	19849	100
2" X 1/16"	19887	100
2" X 1/8"	19888	100



METER COUPLING WASHERS - FIBER

SIZE	ITEM ID	BAG QTY
5/8" X 1/32"	19467	100
5/8" X 1/16"	19468	100
5/8" X 1/8"	19469	100
3/4" X 1/32"	19470	100
3/4" X 1/16"	19471	100
3/4" X 1/8"	19472	100
1" X 1/32"	19473	100
1" X 1/16"	19474	100
1" X 1/8"	19475	100
1-1/2" X 1/16"	19698	100
1-1/2" X 1/32"	19700	100
1-1/2" X 1/8"	19701	100
2" X 1/16"	19702	100
2" X 1/32"	19703	100
2" X 1/8"	19825	100



METER COUPLING WASHERS - LEATHER

SIZE	ITEM ID	BAG QTY
5/8" X 1/16"	19846	100
5/8" X 1/8"	19847	100
3/4" X 1/16"	19844	100
3/4" X 1/8"	19845	100
1" X 1/16"	19826	100
1" X 1/8"	19837	100
1-1/2" X 1/8"	19841	100
2" X 1/8"	19843	100



WATER FLOW CUT-OFF PLUGS

SIZE	ITEM ID	BAG QTY
5/8" FIBER	14672	100
3/4" FIBER	14671	100
1" FIBER	14670	100



METER COUPLING WASHERS - CLOTH INSERT

SIZE	ITEM ID	BAG QTY
1" X 1/8"	19687	100

## HEX NUTS, BOLTS, & WASHERS



FINISHED HEX NUTS - ZINC PLATED

SIZE	ITEM ID	BOX QTY	MASTER CARTON QTY
1/4"	19570	100	5000
3/8"	19572	100	2000
1/2"	19573	100	2000
5/8"	19575	50	1000
3/4"	19577	25	500
7/8"	19579	25	250
1"	19580	25	250

FLAT WASHERS - ZINC PLATED

SIZE	ITEM ID	BOX QTY	MASTER CARTON QTY
1/4"	20006	100	5000
3/8"	20007	100	2000
1/2"	20008	100	2000
5/8"	20009	50	1000
3/4"	20010	25	500
7/8"	20011	25	500
1"	20012	25	250

FENDER WASHERS - ZINC PLATED

SIZE	ITEM ID	BOX QTY	MASTER CARTON QTY
1/4" X 1-1/4"	19996	100	2000
3/8" X 1-1/2"	19998	100	2000
1/2" X 2"	19999	100	2000

304 & 316 stainless also available



BRASS HEX BOLTS AND NUTS

SIZE	ITEM ID
HEX BOLT 5/8-11 X 2-1/2 BRASS	43029
HEX BOLT 5/8-11 X 3 BRASS	18426
HEX BOLT 3/4 X 3-1/4 BRASS	18425
NUT 5/8-11, BRASS, FINISHED, HEX	15872
NUT 3/4-10, BRASS, FINISHED, HEX	34974



## ■ ASTM A242 BENT EYE BOLTS



SIZE	ITEM ID
5/8" X 3-1/2"	14735
3/4" X 4"	14736
3/4" X 4-1/4"	14737
3/4" X 4-1/2"	21669
3/4" X 5"	14738
1" X 6"	14739

## ■ STAINLESS STEEL MANHOLE STRAPS



SIZE	ITEM ID
2"	15545
3"	15546
• 4"	15547
• 6"	15548
• 8"	15549
• 10"	15551
• 12"	15552
15"	15553
18"	15554

## ■ ALL THREAD ROD & ROD COUPLING NUTS



### ALL THREAD ROD - (10 FT. LENGTHS)

TYPE	DIAMETER	ITEM ID	TUBE LENGTH	MASTER LIFT LENGTH
ZINC PLATED	3/8"	13390	250'	6250'
ZINC PLATED	1/2"	13394	120'	3000'
• ZINC PLATED	5/8"	13400	80'	2000'
• ZINC PLATED	3/4"	13411	50'	1250'

### ALL THREAD ROD - (12 FT. LENGTHS)

TYPE	DIAMETER	ITEM ID
304 SS	3/8"	13391
304 SS	1/2"	13397
• 304 SS	3/4"	13412
304 SS	7/8"	13418
304 SS	1"	13427
316 SS	3/8"	13392
316 SS	1/2"	13396
316 SS	3/4"	13413
316 SS	7/8"	13419
316 SS	1"	13428

### ROD COUPLING NUTS - ZINC PLATED

SIZE	ITEM ID	BOX QTY
1/4" X 1-3/4"	16341	100
3/8" X 1-1/8"	16348	100
• 3/8" X 1-3/4"	16342	100
• 1/2" X 1-3/4"	16343	50
• 5/8" X 2-1/8"	16344	25
• 3/4" X 2-1/4"	16345	25
• 7/8" X 2-1/2"	16346	10
1" X 2-1/2"	16347	10

304 & 316 stainless also available





# FIRE HYDRANT ADAPTERS



**PIN LUG ADAPTERS**

DESCRIPTION	ITEM ID
● 1-1/2" Female NPSH X 1-1/2" Male NST	18523
● 1-1/2" Female NST X 1" Male NPT	18548
● 1-1/2" Female NST X 1-1/2" Male NPT	18549
● 2-1/2" Female NST X 3/4" Male Garden Hose	18553
● 2-1/2" Female NPSH X 1-1/2" Male NPT	18558
● 2-1/2" Female NPSH X 1-1/2" Male NST	18564
● 2-1/2" Female NPT X 1-1/2" Male NST	18566
● 2-1/2" Female NST X 1" Male NPT	18568
● 2-1/2" Female NST X 1" Male NPT, No-Lead Brass	18569
● 2-1/2" Female NST X 1-1/2" Male NPSH	18572
● 2-1/2" Female NST X 1-1/2" Male NPT	18575
● 2-1/2" Female NST X 1-1/2" Male NPT, No-Lead Brass	18577
● 2-1/2" Female NST X 1-1/2" Male NST, No-Lead Brass	18579
● 2-1/2" Female NST X 2" Male NPT, No-Lead Brass	18580
● 2-1/2" Female NST X 2" Male NST	18586
● 2-1/2" Female NST X 2" Male NST, No-Lead Brass	18592
● 2-1/2" Female NST X 3/4" Male Garden Hose, No-Lead Brass	18593
● 2-1/2" Female NST X 3/4" Male NPT	18594
● 2-1/2" Female NST X 3/4" Male NPT, No-Lead Brass	18595
● 3" Female NPT X 2-1/2" Male NST	18597



**HEX NIPPLE ADAPTERS**

DESCRIPTION	ITEM ID
<b>FEMALE X MALE HEX NIPPLES</b>	
● 1" Female NPT X 1-1/2" Male NST	19371
● 1-1/2" Female NPSH X 1-1/2" Male NPSH	19376
● 1-1/2" Female NPT X 1" Male NPT	19379
● 1-1/2" Female NPT X 1-1/2" Male NST	19380
● 1-1/2" Female NST X 1" Male NPT	19382
● 1-1/2" Female NST X 1-1/2" Male NPT	19429
● 2" Female NPT X 2-1/2" Male NST	19437
● 2-1/2" Female NPSH X 2-1/2" Male NST	19438
● 2-1/2" Female NPT X 1-1/2" Male NST	19439
● 2-1/2" Female NPT X 1-1/2" Male NST, No-Lead Brass	19443
● 2-1/2" Female NPT X 2-1/2" Male NST	19448
● 2-1/2" Female NST X 2" Male NPT	19449
● 2-1/2" Female NST X 2" Male NPT	19450
● 2-1/2" Female NST X 2-1/2" Male NPT	19453
● 2-1/2" Female NST X 2-1/2" Male NST	19454
● 3" Female NPT X 2-1/2" Male NST	19569
● 4" Female NST X 2-1/2" Male NST	19584
<b>MALE X MALE HEX NIPPLES</b>	
● 1-1/2" Male NPT X 1-1/2" Male NPST	19430
● 1-1/2" Male NST X 1-1/2" Male NPT	19433
● 1-1/2" Male NST X 1-1/2" Male NST	19436
● 2-1/2" Male NPT X 1-1/2" Male NST	19458
● 2-1/2" Male NST X 1-1/2" Male NPT	19460
● 2-1/2" Male NST X 2" Male NPT, No-Lead Brass	19462
● 2-1/2" Male NST X 2-1/2" Male NPT, No-Lead Brass	19463
● 2-1/2" Male NST X 2-1/2" Male NST	19466
● 2-1/2" Male NST X 3" Male NPT, No-Lead Brass	19486
● 2-1/2" Male NST X 1-1/2" Male NST	19591
● 4" Male NST X 4" Male NPT	19586
● 4-1/2" Male NST X 2-1/2" Male NST	19587
● 4-1/2" Male NST X 4" Male NPT	19590
<b>FEMALE X FEMALE HEX NIPPLES</b>	
● 1-1/2" Female NST X 1-1/2" Female NPT	19383
● 1-1/2" Female NST X 1-1/2" Female NST	19389
● 2-1/2" Female NPT X 2-1/2" Female NST	19445



**CROWFOOT COUPLINGS**

DESCRIPTION	ITEM ID
● 3/4" Female NPT, 2 Lug Universal Crowfoot	11219



- NST: National Standard Thread
- NPT: National Pipe Tapered
- NPSH: National Pipe Straight Hose
- GHT: Garden Hose Thread



**HYDRANT SWIVELS**

DESCRIPTION	ITEM ID
<b>SWIVELS</b>	
• 1-1/2" Female NPSH X 1-1/2" Male NPT Pin Lug	19615
• 1-1/2" Female NST X 1-1/2" Male NPT Pin Lug	19624
• 2-1/2" Female NST X 2" Male NPT Pin Lug, No-Lead Brass	19626
• 2-1/2" Female NST X 2-1/2" Male NPT Pin Lug	19635
• 2-1/2" Female NST X 3" Male NPT Pin Lug, No-Lead Brass	19636
<b>DOUBLE SWIVELS</b>	
• 1-1/2" Female NPSH X 1-1/2" Female NPSH Pin Lug	19597
• 1-1/2" Female NPSH X 1-1/2" Female NST Pin Lug	19600
• 1-1/2" Female NPT X 1-1/2" Female NPSH Pin Lug	19616
• 1-1/2" Female NPT X 1-1/2" Female NST Pin Lug	19621
• 1-1/2" Female NST X 1-1/2" Female NST Pin Lug	19623
• 2-1/2" Female NST X 2-1/2" Female NPT Pin Lug	19627
• 2-1/2" Female NST X 2-1/2" Female NST Pin Lug	19633



**CAP AND CHAIN PIN LUG ADAPTERS**

DESCRIPTION	ITEM ID
• 1-1/2" NST Pin Lug	18630
• 2-1/2" NST Pin Lug, No-Lead Brass	19016
• 4-1/2" NST Pin Lug	19024



**PLUG AND CHAIN**

DESCRIPTION	ITEM ID
• 2-1/2" Male NST Plug and Chain	19592



**HYDRANT ADAPTER GASKETS**

DESCRIPTION	ITEM ID
• 1-1/2" ID, 2" OD, 1/8" Thick	19025
• 2-1/2" ID, 3-1/8" OD, 1/8" Thick	19364
• 2-1/2" ID, 3-1/8" OD, 3/16" Thick	19367
• 4-1/2" ID, 5-5/8" OD, 1/4" Thick	19368



**PUMPER NOZZEL GASKETS**

DESCRIPTION	ITEM ID
• 2" ID, 3-1/2" OD, 3/16" Thick	19892
• 3" ID, 5-1/4" OD, 3/16" Thick	19922



**HYDRANT BUSHINGS**

DESCRIPTION	ITEM ID
• 1-1/2" Female NST X 2" Male NST Bushing	18599
• 1-1/2" Female NST X 2-1/2" Male NST Bushing	18600
• 1-1/2" Female NPT X 2-1/2" Male Bushing	18619
• 2" Female NPT X 2-1/2" Male NST Bushing	18624
• 2-1/2" Female NST X 3" Male NPT	18625

# MARKING & LOCATING PRODUCTS



TRIVIEW POST MARKERS

DESCRIPTION	ITEM ID
GREEN	30021
YELLOW	36145
BLUE	22384



3M EMS MARKERS

DESCRIPTION	ITEM ID
• BLUE MARKER BALLS	15488
• GREEN MARKER BALLS	15486
• YELLOW MARKER BALLS	15483
• BLUE NEAR SURFACE MARKERS	33077
• GREEN NEAR SURFACE MARKERS	42198
• YELLOW NEAR SURFACE MARKERS	42871
• BLUE FULL RANGE MARKERS	10052
• GREEN FULL RANGE MARKERS	10053
• YELLOW FULL RANGE MARKERS	42870



MARKING FLAGS

DESCRIPTION	ITEM ID
4" X 5" X 21" STAFF PLAIN - 1000/BX	
• BLUE	12847
• GREEN	12851
• WHITE	12856
• YELLOW	12858
• ORANGE	CALL
4" X 5" X 21" STAFF W/SCRIPT - 1000/BX	
• BLUE	12850
• GREEN	12853
• WHITE	12857
• YELLOW	12859
• ORANGE	CALL

Others available



LINE MARKERS/STICKERS

DESCRIPTION	ITEM ID
4" X 66" MARKERS	
• BLUE	17318
• GREEN	17320
• WHITE	17321
• YELLOW	17322
STD. LEGEND STICKER	
• BLUE WATER	14762
• BLUE WATER VALVE	14763
• GREEN SEWER	14761
• WHITE SEWER PRESSURE	14759
• YELLOW GAS	14760

Others available



RUST-OLEUM MARKING PAINT

DESCRIPTION	ITEM ID
WATER BASED INVERTED	
• BLUE	10376
• GREEN	10679
• YELLOW	10377
• WHITE	10380
• ORANGE	10378
• PINK	10680
• RED	10379
SOLVENT BASED INVERTED	
• BLUE	10372
• GREEN	10672
• YELLOW	10373
• WHITE	10375
• ORANGE	10369
• PINK	10674
• RED	10374
24 CASES FFA FROM FACTORY	
BANNER RED	
• HYDRANT UPRIGHT	10675

Others available



HYDRANT MARKERS

DESCRIPTION	ITEM ID
• MARKERS (50/BOX)	12409
• ADHESIVE (6/BOX)	12083

# MISCELLANEOUS PRODUCTS



GRANULAR CHLORINE

SIZE	ITEM ID
• 5# - 6/Case	10191
• 25#	10190
• 100#	10293



PULL TAPE

SIZE	ITEM ID
• 1250#, 1/2" X 3000'	15158
• 1800#, 5/8" X 3000'	15159
• 2500#, 3/4" X 3000'	15160



COTTON WIPING RAGS - 10#

SIZE	ITEM ID
• 0-500#	11929



BLUE METER SEALS

SIZE	ITEM ID
• 100 PCS	36804



UTILITY HAND PUMPS

DESCRIPTION	ITEM ID
24" PUMP X 36" HOSE	43468
36" PUMP X 36" HOSE	10239
• 36" PUMP X 72" HOSE	10240
24" PUMP EXTENSION	43469

# MARKING TAPE



## NON-DETECTABLE TAPE

DESCRIPTION	ITEM ID
3" BLUE	12691
3" GREEN	12689
3" YELLOW	12685
3" PURPLE	12686
3" ORANGE	12677
6" BLUE	13066
6" GREEN	13064
6" PURPLE	40839

Others available



## DETECTABLE TAPE

DESCRIPTION	ITEM ID
2" BLUE	12517
2" GREEN	12516
2" YELLOW	12513
2" BROWN	12512
2" PURPLE	12515
3" BLUE	12690
3" GREEN	12688
3" YELLOW	12684
3" PURPLE	12687
6" BLUE	13065
6" GREEN	13063
6" YELLOW	13060
6" BROWN	13059
6" PURPLE	18589
12" BLUE	13323
12" GREEN	13321
12" BROWN	12136
12" PURPLE	13320

Others available

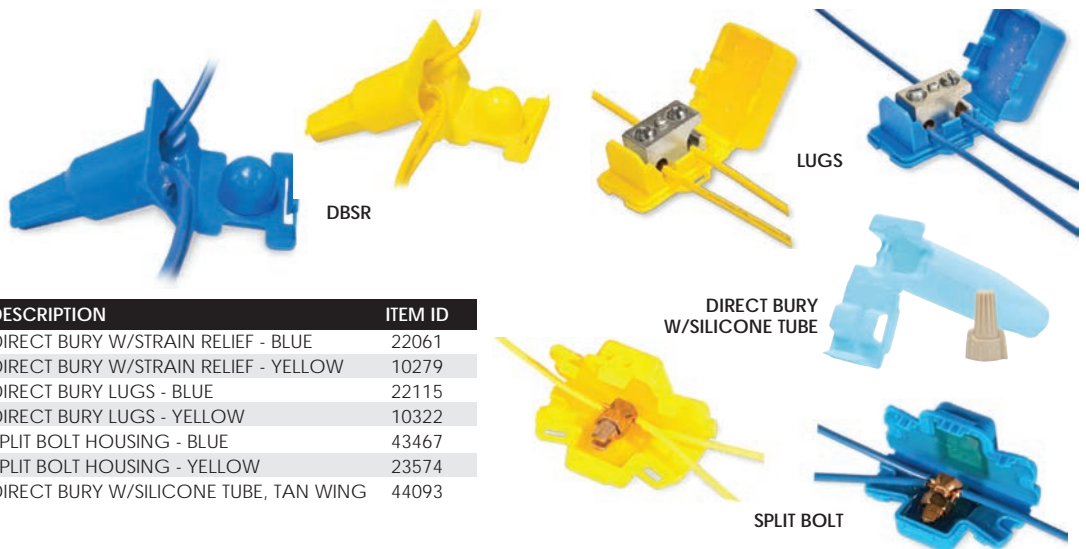
# COPPER CLAD TRACER WIRE



DESCRIPTION	ITEM ID	QTY/BOX	QTY/PALLET
WIRE 10 AWG 500 RL PE30 BLUE CCS	13285	4 ROLLS OF 500'	108 ROLLS OF 500'
WIRE 10 AWG 500 RL PE30 GREEN CCS	13286	4 ROLLS OF 500'	108 ROLLS OF 500'
WIRE 10 AWG 500 RL PE30 YELLOW CCS	13287	4 ROLLS OF 500'	108 ROLLS OF 500'
WIRE 12 AWG 500 RL PE30 BLUE CCS	22068	4 ROLLS OF 500'	180 ROLLS OF 500'
WIRE 12 AWG 500 RL PE30 GREEN CCS	22072	4 ROLLS OF 500'	180 ROLLS OF 500'
WIRE 12 AWG 500 RL PE30 YELLOW CCS	22091	4 ROLLS OF 500'	180 ROLLS OF 500'
WIRE 14 AWG 500 RL PE30 BLUE CCS	22070	4 ROLLS OF 500'	252 ROLLS OF 500'
WIRE 14 AWG 500 RL PE30 GREEN CCS	22074	4 ROLLS OF 500'	252 ROLLS OF 500'
WIRE 14 AWG 500 RL PE30 YELLOW CCS	13295	4 ROLLS OF 500'	252 ROLLS OF 500'
WIRE 18 AWG 500 RL PE30 YELLOW CCS	13296	4 ROLLS OF 500'	252 ROLLS OF 500'

Also available in PE45 coating. Other tracer wires available: THHN - stranded and solid, bare - no coating, and extra high strength.

# WIRE CONNECTORS



DESCRIPTION	ITEM ID
DIRECT BURY W/STRAIN RELIEF - BLUE	22061
DIRECT BURY W/STRAIN RELIEF - YELLOW	10279
DIRECT BURY LUGS - BLUE	22115
DIRECT BURY LUGS - YELLOW	10322
SPLIT BOLT HOUSING - BLUE	43467
SPLIT BOLT HOUSING - YELLOW	23574
DIRECT BURY W/SILICONE TUBE, TAN WING	44093

# MAGNETIZED TRACER STATIONS

DESCRIPTION	ITEM ID
LOW TRAFFIC TEST STATION 2" X 15" BLUE LID WHITE RHINO	15426
LOW TRAFFIC XL TEST STATION 2" X 15" - 24" BLUE LID WHITE RHINO	42925
HIGH TRAFFIC TEST STATION 2" X 15" BLUE LID WHITE RHINO	32883

The lid is available in several different colors depending on your utility application.





# POLYETHYLENE ENCASEMENT FOR DUCTILE IRON PIPE



8 MIL, UTILITY GRADE, AWWA SPEC

SIZE	COLOR	ITEM ID
• 18"	PRINTED - BLACK	16200
• 29"	PRINTED - BLACK	16205
• 37"	PRINTED - BLACK	16211
• 52"	PRINTED - BLACK	16218
• 67"	PRINTED - BLACK	16222
• 81"	PRINTED - BLACK	16224
• 18"	PLAIN - BLACK	16183
• 29"	PLAIN - BLACK	16185
• 37"	PLAIN - BLACK	16187
• 52"	PLAIN - BLACK	16192
• 67"	PLAIN - BLACK	16195
• 81"	PLAIN - BLACK	16197
• 108"	PLAIN - BLACK	16181
• 18"	PRINTED - BLUE	42861
• 29"	PRINTED - BLUE	42862
• 37"	PRINTED - BLUE	42865
• 52"	PRINTED - BLUE	42863
• 67"	PRINTED - BLUE	42864
• 81"	PRINTED - BLUE	42866
• 18"	PRINTED - PURPLE	16204
• 29"	PRINTED - PURPLE	16209
• 37"	PRINTED - PURPLE	16215
• 52"	PRINTED - PURPLE	16220
• 67"	PRINTED - PURPLE	16223
• 81"	PRINTED - PURPLE	42858
• 18"	PRINTED - CLEAR	72875
• 29"	PRINTED - CLEAR	72876
• 37"	PRINTED - CLEAR	72877
• 52"	PRINTED - CLEAR	72878
• 67"	PRINTED - CLEAR	72879
• 81"	PRINTED - CLEAR	72880
• 18"	PRINTED - GREEN	42872
• 29"	PRINTED - GREEN	42874
• 37"	PRINTED - GREEN	42911
• 52"	PRINTED - GREEN	42912
• 67"	PRINTED - GREEN	42868
• 81"	PRINTED - GREEN	42873
• 18"	PRINTED - RED	24552
• 29"	PRINTED - RED	24553
• 37"	PRINTED - RED	72889
• 52"	PRINTED - RED	72890
• 67"	PRINTED - RED	72891
• 81"	PRINTED - RED	72892
• 18"	PRINTED - YELLOW	72882
• 29"	PRINTED - YELLOW	72883
• 37"	PRINTED - YELLOW	72884
• 52"	PRINTED - YELLOW	72885
• 67"	PRINTED - YELLOW	72886
• 81"	PRINTED - YELLOW	72887

## POLYWRAP SIZING CHART

PIPE SIZE	LAY FLAT TUBE SIZE
3", 4", 6"	18" X 200 FT
8", 10", 12"	29" X 200 FT
14", 16", 18"	37" X 200 FT
20", 24"	52" X 200 FT
30"	67" X 140 FT
36", 42"	81" X 120 FT
48"	108" X 100 FT

Custom colors available for manufacturing, minimum order applies, call for details.

Perforated polywrap & other thicknesses also available.

## POLYWRAP TAPE



10 MIL THICK  
PVC PIPEWRAP/POLYWRAP TAPE

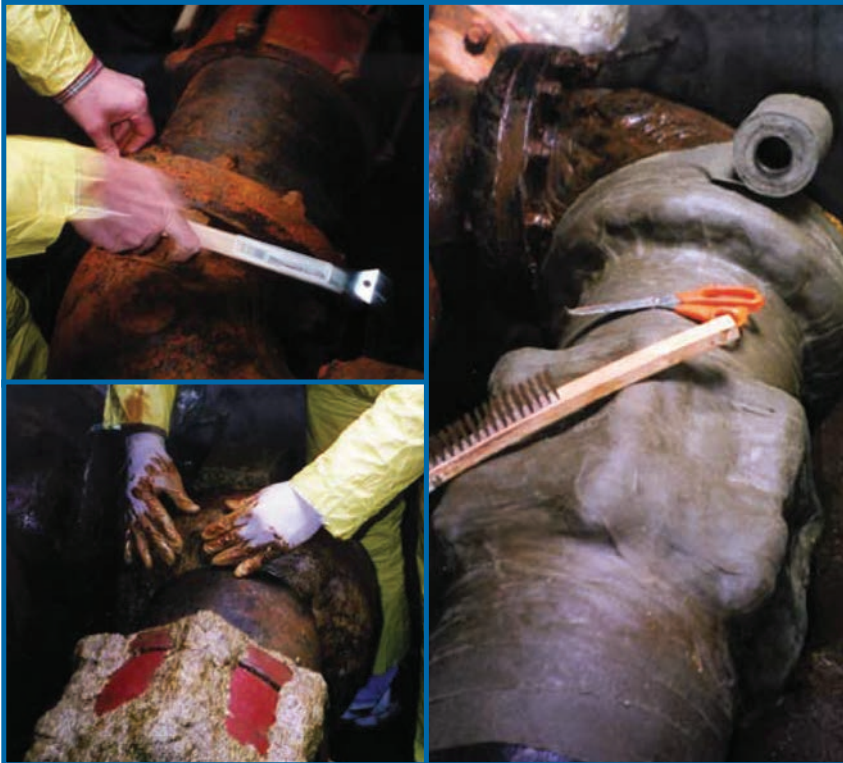
SIZE	ITEM ID	PER CASE
• 2" Wide	16279	24/Case
• 4" Wide	16280	12/Case

Each roll individually wrapped.  
Sold in case quantities only.



- Features:**
- Excellent sealing and molding properties application
  - No VOC's
  - Will adhere to metal, PVC and polyethylene
  - Not affected by water, acids and salts
  - Inert and environmentally stable
  - Minimal surface preparation (SSPC SP 2-3)
  - Cold applied, self supporting and flexible
  - Provides a smooth profile

## HIGH PERFORMANCE PETROLATUM TAPES



- Features:**
- Applied to marginally prepared surfaces (SSPC SP 2-3)
  - Conforms to irregular shapes and profiles
  - Can be applied to cold, wet surfaces
  - Not effected by water, acid, salts or soil organics
  - Encapsulation of lead paint
  - Contains no solvents
- Uses & Applications:**
- Provides long term corrosion protection to above and below ground pipes, flanges, valves and related surfaces
  - Can be applied to cold, wet and underwater surfaces that are minimally prepared (SSPC SP2-3)
  - **Atmospheric uses:** piping, structural steel, flanges & valves, sweating lines, tank bases, pipe crossing, cooling tower piping, and under thermal insulation
  - **Buried uses:** flanges & valves, pipe, weld joints, pipe couplings, pipe penetrations, cadwelds, bolted fittings, ductile/cast iron pipe
  - **Marine uses:** steel piles, timber piles, flanges & valves, submarine pipeline repairs, pipe hangers, concrete piles, risers, under deck piping, offshore platforms, H-piles, tie rods & end connections
  - **Commercial and residential uses:** plumbing connections, cooling tower piping, cable splices, roof repairs, waterproofing & sealing, threaded connections, battery terminals, trays & tie downs, trailer axles & U-bolts
  - Easy application from arctic to tropical temperatures
  - Ready for immediate service after application
  - Meets AWWA C217 Standard
  - History of proven applications since 1929



## DIGGING & STRIKING TOOLS



38007



38008



38009



38010



38011



38013



38014



38000



16413



16412



38002



10286



38017



38020



38021



38004



16887



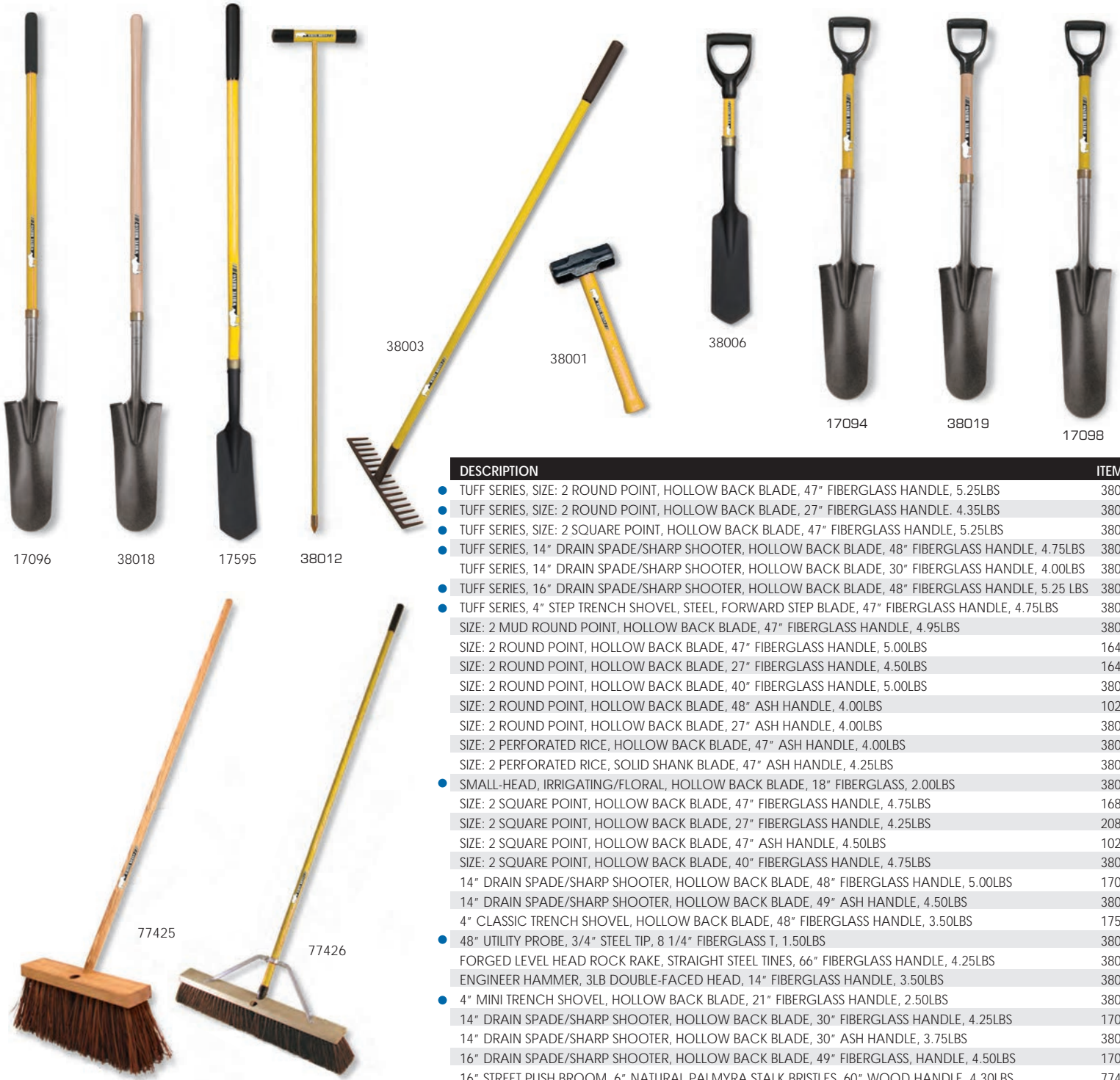
20811



10287



38005



DESCRIPTION	ITEM ID
● TUFF SERIES, SIZE: 2 ROUND POINT, HOLLOW BACK BLADE, 47" FIBERGLASS HANDLE, 5.25LBS	38007
● TUFF SERIES, SIZE: 2 ROUND POINT, HOLLOW BACK BLADE, 27" FIBERGLASS HANDLE, 4.35LBS	38008
● TUFF SERIES, SIZE: 2 SQUARE POINT, HOLLOW BACK BLADE, 47" FIBERGLASS HANDLE, 5.25LBS	38009
● TUFF SERIES, 14" DRAIN SPADE/SHARP SHOOTER, HOLLOW BACK BLADE, 48" FIBERGLASS HANDLE, 4.75LBS	38010
● TUFF SERIES, 14" DRAIN SPADE/SHARP SHOOTER, HOLLOW BACK BLADE, 30" FIBERGLASS HANDLE, 4.00LBS	38011
● TUFF SERIES, 16" DRAIN SPADE/SHARP SHOOTER, HOLLOW BACK BLADE, 48" FIBERGLASS HANDLE, 5.25 LBS	38013
● TUFF SERIES, 4" STEP TRENCH SHOVEL, STEEL, FORWARD STEP BLADE, 47" FIBERGLASS HANDLE, 4.75LBS	38014
● SIZE: 2 MUD ROUND POINT, HOLLOW BACK BLADE, 47" FIBERGLASS HANDLE, 4.95LBS	38000
● SIZE: 2 ROUND POINT, HOLLOW BACK BLADE, 47" FIBERGLASS HANDLE, 5.00LBS	16413
● SIZE: 2 ROUND POINT, HOLLOW BACK BLADE, 27" FIBERGLASS HANDLE, 4.50LBS	16412
● SIZE: 2 ROUND POINT, HOLLOW BACK BLADE, 40" FIBERGLASS HANDLE, 5.00LBS	38002
● SIZE: 2 ROUND POINT, HOLLOW BACK BLADE, 48" ASH HANDLE, 4.00LBS	10286
● SIZE: 2 ROUND POINT, HOLLOW BACK BLADE, 27" ASH HANDLE, 4.00LBS	38017
● SIZE: 2 PERFORATED RICE, HOLLOW BACK BLADE, 47" ASH HANDLE, 4.00LBS	38020
● SIZE: 2 PERFORATED RICE, SOLID SHANK BLADE, 47" ASH HANDLE, 4.25LBS	38021
● SMALL-HEAD, IRRIGATING/FLOREAL, HOLLOW BACK BLADE, 18" FIBERGLASS, 2.00LBS	38004
● SIZE: 2 SQUARE POINT, HOLLOW BACK BLADE, 47" FIBERGLASS HANDLE, 4.75LBS	16887
● SIZE: 2 SQUARE POINT, HOLLOW BACK BLADE, 47" FIBERGLASS HANDLE, 4.25LBS	20811
● SIZE: 2 SQUARE POINT, HOLLOW BACK BLADE, 47" ASH HANDLE, 4.50LBS	10287
● SIZE: 2 SQUARE POINT, HOLLOW BACK BLADE, 40" FIBERGLASS HANDLE, 4.75LBS	38005
● 14" DRAIN SPADE/SHARP SHOOTER, HOLLOW BACK BLADE, 48" FIBERGLASS HANDLE, 5.00LBS	17096
● 14" DRAIN SPADE/SHARP SHOOTER, HOLLOW BACK BLADE, 49" ASH HANDLE, 4.50LBS	38018
● 4" CLASSIC TRENCH SHOVEL, HOLLOW BACK BLADE, 48" FIBERGLASS HANDLE, 3.50LBS	17595
● 48" UTILITY PROBE, 3/4" STEEL TIP, 8 1/4" FIBERGLASS T, 1.50LBS	38012
● FORGED LEVEL HEAD ROCK RAKE, STRAIGHT STEEL TINES, 66" FIBERGLASS HANDLE, 4.25LBS	38003
● ENGINEER HAMMER, 3LB DOUBLE-FACED HEAD, 14" FIBERGLASS HANDLE, 3.50LBS	38001
● 4" MINI TRENCH SHOVEL, HOLLOW BACK BLADE, 21" FIBERGLASS HANDLE, 2.50LBS	38006
● 14" DRAIN SPADE/SHARP SHOOTER, HOLLOW BACK BLADE, 30" FIBERGLASS HANDLE, 4.25LBS	17094
● 14" DRAIN SPADE/SHARP SHOOTER, HOLLOW BACK BLADE, 30" ASH HANDLE, 3.75LBS	38019
● 16" DRAIN SPADE/SHARP SHOOTER, HOLLOW BACK BLADE, 49" FIBERGLASS, HANDLE, 4.50LBS	17098
● 16" STREET PUSH BROOM, 6" NATURAL PALMYRA STALK BRISTLES, 60" WOOD HANDLE, 4.30LBS	77425
● 24" STREET PUSH BROOM, 4" POLYPALM PLASTIC BRISTLES, BRACED 60" FIBERGLASS HANDLE, 3.50LBS	77426

Other styles available. Contact customer service for descriptions.



Make sure to ask your EGW representative about the following products and services that we provide:

- Plant or water line hardware packages
- Electronic repairs - pipe locators, gas detectors, etc.
- Fusion and electrofusion equipment and training
- Gas detection equipment
- Polyethylene - pipe, fittings, tools, equipment, etc.
- Protective pipe coatings - tapes or liquids
- Cathodic protection supplies
- Steel pipe or casing

## EGW Water & Plumbing

1406 Hutton Drive • Carrollton, TX 75006

972.446.1655

[www.egwwaterandplumbing.com](http://www.egwwaterandplumbing.com)

Proud member of:

**wasda**<sup>®</sup>

